

MLS Area SC

Residential Statistics

Independence Title

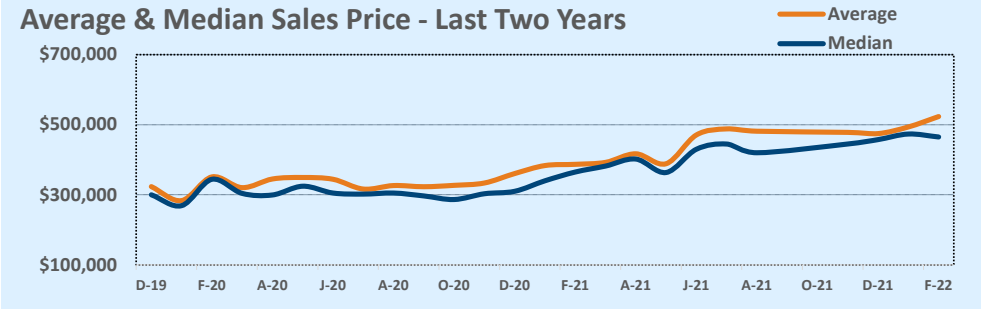
December 2021

Listings	This Month			Year-to-Date		
	Dec 2021	Dec 2020	Change	2021	2020	Change
Single Family Sales	49	23	+113.0%	446	429	+4.0%
Condo/TH Sales	2	8	-75.0%	43	61	-29.5%
Total Sales	51	31	+64.5%	489	490	-0.2%
New Homes Only	--	5	--	17	65	-73.8%
Resale Only	51	26	+96.2%	472	425	+11.1%
Sales Volume	\$24,207,966	\$11,179,830	+116.5%	\$220,924,027	\$162,386,678	+36.0%
New Listings	47	28	+67.9%	672	472	+42.4%
Pending	--	--	--	--	--	--
Withdrawn	3	1	+200.0%	14	10	+40.0%
Expired	3	1	+200.0%	14	10	+40.0%
Months of Inventory	0.8	0.3	+67.8%	N/A	N/A	--

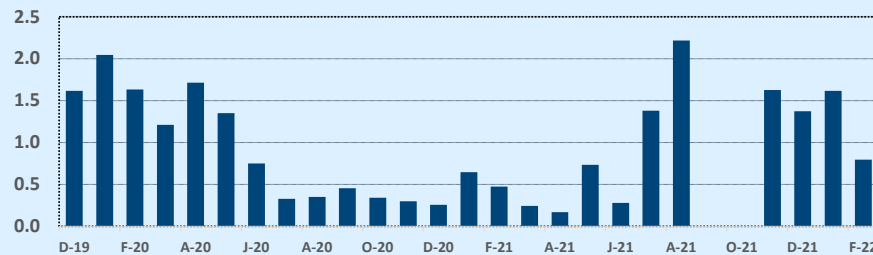
Price Range	This Month			Year-to-Date		
	New	Sales	DOM	New	Sales	DOM
\$149,999 or under	--	--	--	1	1	1
\$150,000- \$199,999	--	--	--	1	--	--
\$200,000- \$249,999	--	--	--	6	8	14
\$250,000- \$299,999	--	1	66	31	15	8
\$300,000- \$349,999	--	--	--	59	53	5
\$350,000- \$399,999	5	9	14	137	113	10
\$400,000- \$449,999	9	11	35	122	107	11
\$450,000- \$499,999	6	16	35	101	62	19
\$500,000- \$549,999	8	3	25	50	34	12
\$550,000- \$599,999	4	5	10	46	28	12
\$600,000- \$699,999	3	5	24	69	42	13
\$700,000- \$799,999	8	--	--	29	18	8
\$800,000- \$899,999	1	1	27	9	7	25
\$900,000- \$999,999	2	--	--	8	1	6
\$1M - \$1.99M	--	--	--	1	--	--
\$2M - \$2.99M	1	--	--	1	--	--
\$3M+	--	--	--	1	--	--
Totals	47	51	28	672	489	11

Average	This Month			Year-to-Date		
	Dec 2021	Dec 2020	Change	2021	2020	Change
List Price	\$474,298	\$356,188	+33.2%	\$432,731	\$332,644	+30.1%
List Price/SqFt	\$245	\$169	+45.1%	\$220	\$161	+36.7%
Sold Price	\$474,666	\$360,640	+31.6%	\$451,787	\$331,401	+36.3%
Sold Price/SqFt	\$245	\$171	+43.4%	\$230	\$161	+43.0%
Sold Price / Orig LP	100.2%	101.3%	-1.1%	105.0%	99.8%	+5.2%
Days on Market	28	18	+50.8%	11	29	-61.5%

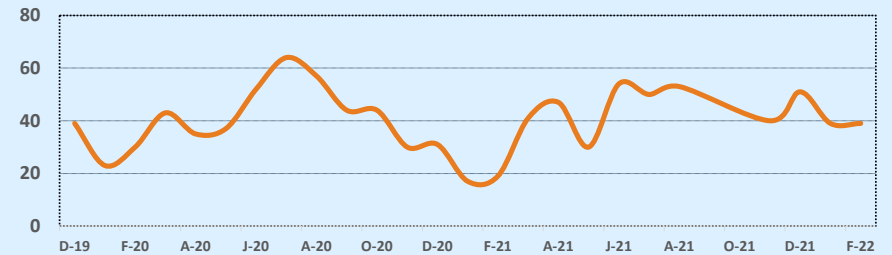
Median	This Month			Year-to-Date		
	Dec 2021	Dec 2020	Change	2021	2020	Change
List Price	\$464,999	\$310,000	+50.0%	\$405,000	\$299,927	+35.0%
List Price/SqFt	\$248	\$171	+45.2%	\$218	\$161	+35.2%
Sold Price	\$457,499	\$310,000	+47.6%	\$425,000	\$301,031	+41.2%
Sold Price/SqFt	\$249	\$176	+41.4%	\$229	\$162	+41.3%
Sold Price / Orig LP	100.0%	100.0%	+0.0%	101.5%	100.0%	+1.5%
Days on Market	25	3	+733.3%	5	8	-37.5%



Months of Inventory - Last Two Years



Number of Sales - Last Two Years



Based on information from the Austin Board of REALTORS® (alternatively, from ACTRIS). Neither the Board nor ACTRIS guarantees or is in any way responsible for its accuracy. The Austin Board of REALTORS®, ACTRIS and their affiliates provide the MLS and all content therein "AS IS" and without any warranty, express or implied. Data maintained by the Board or ACTRIS may not reflect all real estate activity in the market.